

# Total Access 5004

## Carrier class Multi-service Access and Aggregation Platform

### Product Features

- Native Ethernet core
- Broadest support for FTTx, Packet Optical and Carrier Ethernet application
- Non-blocking service architecture
- Supports TDM, ATM and Ethernet network interfaces
- Copper and fibre transport and access
- Fully redundant, carrier class design
- Digital and metallic test access
- Multiple network management capabilities including full FCAPS support
- Supported by ADTRAN AOE Service Management
- Full turn-key cabinet solutions

### The ADTRAN Total Access 5004 is a carrier class multi-service access and aggregation platform that extends the portfolio of the world-class Total Access 5000 product line.

With a pure Ethernet core, the Total Access 5004 supports both legacy and emerging service interfaces over copper and fibre, easily scaling to support even the most bandwidth-intensive applications in a compact 2RU form factor. In addition to supporting both legacy and next generation access interfaces, the Ethernet core of the Total Access 5004 provides a scalable and cost-optimised aggregation point in the network, with interfaces ranging from E1 to 10 and 20 Gigabit Ethernet.

Environmentally hardened, the Total Access 5004 is designed with the service provider in mind and is equally capable of deployment in central exchange or remote street cabinet locations. Similar to the Total Access 5000, the Total Access 5004 chassis provides a truly scalable architecture that is designed to migrate with the network, providing flexible copper and fibre termination options based on network applications. With the simple change of a “personality module,” equipment obsolescence can be avoided and network investments protected with a platform that is also capable of scaling to meet the needs of network evolution for years to come. The Total Access 5004 supports a variety

of access and line modules with supported applications including Broadband Digital Loop Carrier, Fibre-to-the-Home (FTTH), Fibre to-the-Cabinet (FTTC), Carrier Ethernet, Ethernet Aggregation, legacy business and residential aggregation, as well as next generation Optical Networking Edge (ONE) aggregation and transport in a 2RU compact design.

The Total Access 5004 supports a wide variety of management options. Transaction Language 1 (TL1) is used to communicate alarms to legacy Operation Support Systems (OSS). Alternatively, Extensible Markup Language (XML) can also be used. An Ethernet 10/100Base-T or standard RS-232 connector is used for management access and connection to SNMP networks. Additionally, the Total Access 5004 is supported by ADTRAN’s Advanced Operational Environment (AOE). ADTRAN AOE provides a Web GUI management interface and support for XML and TL1 north-bound OSS interfaces. The XML and TL1 north-bound interfaces provide customers the ability to automate flow-through services to the Total Access 5004 platform.

The Total Access 5004 is designed for deployment in 19-inch or 23-inch relay racks and has four access module slots, two resource slots, two dedicated management and switch modules (MSM), and a field replaceable fan.



**ADTRAN, Inc.**  
International Department  
U.S. Headquarters  
901 Explorer Boulevard  
Huntsville, Alabama 35806  
www.adtran.com/global

+1 256 963 8000  
+1 256 963 6300 fax

international@adtran.com  
International Customer Service  
+1 256 963 8716

**Asia—Beijing, China**  
+86 10 8527 5011  
sales.china@adtran.com

**Asia—Hong Kong**  
+852 3187 7111  
sales.asia@adtran.com

**Asia—Singapore**  
+65 6232 2305  
sales.asia@adtran.com

**Australia/New Zealand—  
Melbourne, Australia**  
+61 3 9658 0500  
sales.australia@adtran.com

**Australia/New Zealand—  
Sydney, Australia**  
+61 2 8456 0101  
+61 2 8456 0105  
sales.australia@adtran.com

**Canada Headquarters—  
Toronto, Ontario**  
+1 877 923 8726  
+1 905 625 2515  
sales.canada@adtran.com

**Canada—Montreal, Quebec**  
+1 877 923 8726  
+1 514 940 2888  
sales.canada@adtran.com

**Europe, Middle East and Africa  
Headquarters—Munich Germany**  
+49 89 411097 111  
sales.europe@adtran.com

**Germany**  
+49 89 411097 111  
sales.germany@adtran.com

**Central/East Europe**  
+49 89 411097 111  
sales.cee@adtran.com

**South Europe**  
+49 89 411097 111  
sales.southeurope@adtran.com

**West/North Europe**  
+44 1189 317080  
sales.wne@adtran.com

**Middle East and Africa**  
+49 89 411097 111  
sales.mea@adtran.com

**Mexico and Central America**  
+1 256 963 3321  
+1 52 55 5280 0265 Mexico  
sales.mexico@adtran.com

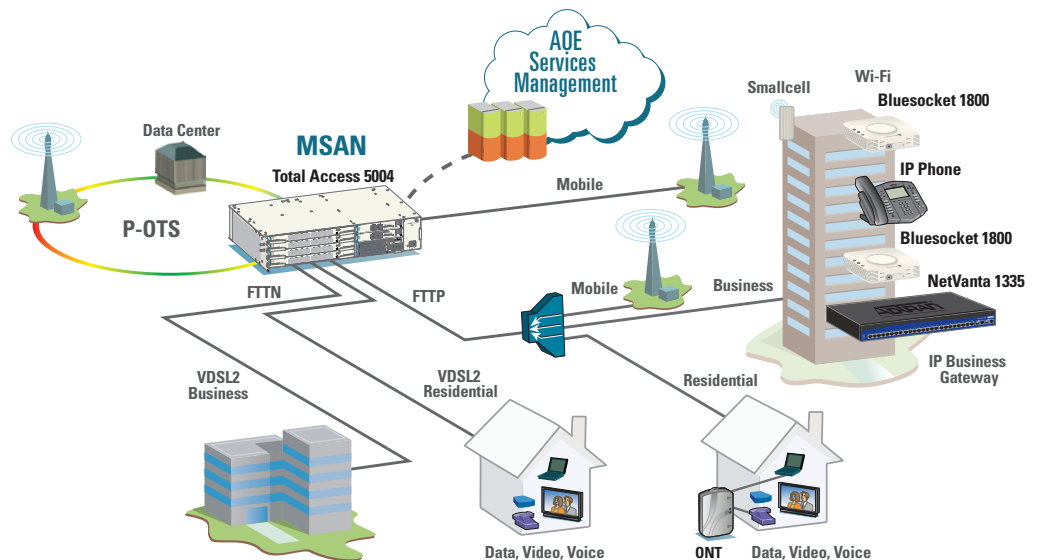
**South America**  
+1 256 963 3185  
sales.brazil@adtran.com  
sales.latam@adtran.com



ADTRAN is an ISO 9001, ISO 14001,  
and a TL 9000 certified supplier.

161187004F1-8A September  
Copyright © 2013 ADTRAN, Inc.  
All rights reserved.

# Total Access 5004



## Product Specifications

### Mechanical

- **Dimensions:** 89 mm x 450 mm x 295 mm (H x W x D) (3.5 in. x 17.7 in. x 11.6 in.) two Rack Mountable Units (RMU)

### Interfaces

- **Transport:** Ethernet
- **Physical:** Varies Per Access Module

### Electrical

- **DC Power:** -42 to -72 VDC and +21 to +27 VDC
- **Connection:** Screw terminals (A and B feed)

### Regulatory Standards

- RoHS 6 of 6
- NEBS Level III
- Telcordia GR-1089 CORE, Issue 4 and GR-63 CORE, Issue 3
- NRTL Listed; UL 60950 and FCC Part 15, Class A
- International CE Mark
- ETS 300 019 Class 1.2, 2.3, 3.3
- ITU K.20
- IEC60950-1 CB Scheme Report including EN 60950-1 and AS/NZS60950
- ETSI EN 300-132-2 and EN 300 386
- EN 55022 Class A
- EN 61000-4-11
- ACA SO43 (PSD)

### Management

- **Electrical:** RS-232 Electrical Interface
- **Ethernet:** 10/100Base-T interface
- **Protocols:** SNMP, TLI, XML, Telnet, and Secure Telnet (SSHv2)

### Environmental

- **Operating Temperature:** -40° C to +70° C (-40° F to +158° F)
- **Storage Temperature:** -40° C to +70° C (-40° F to +158° F)
- **Relative Humidity:** Up to 95%, non-condensing

## Applications and Services Supported

- FTTH for VoIP, IPTV and Business Ethernet
- FTTCab for VoIP, IPTV and Business Ethernet
- Simplified FTTCab to FTTH migration/transition
- Compact ONE for Premium Services 10G Aggregation and Packet Optical Transport
- Carrier Ethernet services over any medium (DS1/E1, DS3, SHDSL, ADSL2+, VDSL2, GPON, Fibre, Wavelength)

## Ordering Information

Equipment	Part No.
<b>Total Access 5004 Kit with Fan</b> (includes 1187004F1 Chassis, 1187064F1 Power/Alarm, and 1187094F1 Fan)	<b>4187004F1</b>
<b>Total Access 5004 Individual Parts</b>	
Chassis 19-inch	<b>1187004F1</b>
Power/ALM Module	<b>1187064F1</b>
Filter 19-inch Chassis	<b>1187092F1</b>
Fan Mod 19-in Chassis	<b>1187094F1</b>
<b>Total Access 5000 Blanks</b>	
AM Blank (Front)	<b>1187921E1</b>
AM Blank Dual Slot (Front)	<b>1187922E1</b>
AMIO2 Blank (Rear)	<b>1187923G1</b>
AMIO1 Blank (Rear)	<b>1187925G1</b>
<b>Total Access 5004 Blanks</b>	
MSM Blank Panel (Front)	<b>1187927F1</b>
Resource Blank Panel (Front)	<b>1187928F1</b>
Resource-2 Blank Panel (Front)	<b>1187929F1</b>
<b>Managed Switch Module (MSM) Commons</b>	
<b>Total Access 5004 MSM 2-1GE</b>	<b>1187013F1</b>
<b>Total Access 5004 MSM 20-10GE</b>	<b>1187016F1</b>

ADTRAN believes the information in this publication to be accurate as of publication date, and is not responsible for error. Specifications subject to change without notice. ADTRAN and Total Access are registered trademarks of ADTRAN, Inc. and its affiliates in various countries. All other trademarks mentioned in this document are the property of their respective owners.

ADTRAN warranty duration and entitlements vary by product and geography. For specific warranty information, visit [www.adtran.com/warranty](http://www.adtran.com/warranty)

ADTRAN products may be subject to U.S. export controls and other trade restrictions. Any export, re-export, or transfer of the products contrary to law is prohibited. For more information regarding ADTRAN's export license, please visit [www.adtran.com/exportlicense](http://www.adtran.com/exportlicense)